

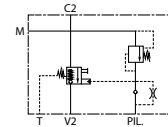
VÁLVULAS HIDRÁULICAS

Hydraulic valves
Valves hydrauliques
Valvole idrauliche

Válvula excavadora bloqueo y control, 3/8" dcha



Flow check and metering excavator valve, 3/8, right
Valve excavatrice, de blocage et control, 3/8", droite
Valvola per scavatori di blocco e controllo 3/8" versione destra

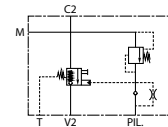


Referencia Part n°	ROSCA THREAD	CAUDAL MÁX. (l/min) MAX. FLOW (l/min)	PRESIÓN MÁX. (bar) MAX. PRESSURE (bar)	€
FPEXC35S3/8LDX0550	3/8" BSP	35	420	349,58

Válvula excavadora bloqueo y control, 3/8" izq



Flow check and metering excavator valve, 3/8, left
Valve excavatrice, de blocage et control, 3/8", gauche
Valvola per scavatori di blocco e controllo 3/8" versione sinistra

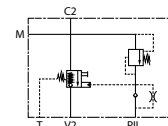


Referencia Part n°	ROSCA THREAD	CAUDAL MÁX. (l/min) MAX. FLOW (l/min)	PRESIÓN MÁX. (bar) MAX. PRESSURE (bar)	€
FPEXC35S3/8LSX0550	3/8" BSP	35	420	349,58

Válvula excavadora bloqueo y control, 1/2" dcha



Flow check and metering excavator valve, 1/2, right
Valve excavatrices, de blocage et control, 1/2", droite
Valvola per scavatori di blocco e controllo 1/2" versione destra

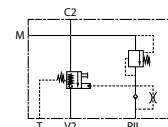


Referencia Part n°	ROSCA THREAD	CAUDAL MÁX. (l/min) MAX. FLOW (l/min)	PRESIÓN MÁX. (bar) MAX. PRESSURE (bar)	€
FPEXC90S1/2LDX0550	1/2" BSP	100	420	408,90

Válvula excavadora bloqueo y control, 1/2" izq



Flow check and metering excavator valve, 1/2, left
Valve excavatrices, de blocage et control, 1/2", gauche
Valvola per scavatori di blocco e controllo 1/2" versione sinistra

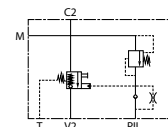


Referencia Part n°	ROSCA THREAD	CAUDAL MÁX. (l/min) MAX. FLOW (l/min)	PRESIÓN MÁX. (bar) MAX. PRESSURE (bar)	€
FPEXC90S1/2LSX0550	1/2" BSP	100	420	408,90

Válvula excavadora bloqueo y control, 3/4" dcha



Flow check and metering excavator valve, 3/4, right
Valve excavatrices, de blocage et control, 3/4", droite
Valvola per scavatori di blocco e controllo 3/4" versione destra

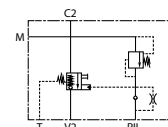


Referencia Part n°	ROSCA THREAD	CAUDAL MÁX. (l/min) MAX. FLOW (l/min)	PRESIÓN MÁX. (bar) MAX. PRESSURE (bar)	€
FPEXC150S3/4LDX0550	3/4" BSP	150	420	432,21

Válvula excavadora bloqueo y control, 3/4" izq



Flow check and metering excavator valve, 3/4, left
Valve excavatrices, de blocage et control, 3/4", gauche
Valvola per scavatori di blocco e controllo 3/4" versione sinistra



Referencia Part n°	ROSCA THREAD	CAUDAL MÁX. (l/min) MAX. FLOW (l/min)	PRESIÓN MÁX. (bar) MAX. PRESSURE (bar)	€
FPEXC150S3/4LSX0550	3/4" BSP	150	420	432,21

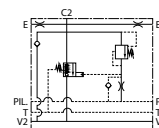
VÁLVULAS HIDRÁULICAS

Hydraulic valves
Valves hydrauliques
Valvole idrauliche

Válvula excavadora bloqueo y control, 250 l/min



Flow check and metering excavator valve, 250 l/min
Valve excavatrices, de blocage et control, 250 l/min
Valvola per scavatori di blocco e controllo, 250 l/min

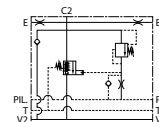


Referencia Part n°	ROSCA THREAD	CAUDAL MÁX. (l/min) MAX. FLOW (l/min)	PRESIÓN MÁX. (bar) MAX. PRESSURE (bar)	€
FPEXC250S3/41F3000	3/4" SAE 3000	250	420	699,16
FPEXC250S3/41F6000	3/4" SAE 6000	250	420	699,16

Válvula excavadora bloqueo y control, 400 l/min



Flow check and metering excavator valve, 400 l/min
Valve excavatrices, de blocage et control, 400 l/min
Valvola per scavatori di blocco e controllo, 400 l/min

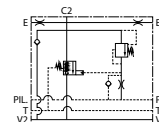


Referencia Part n°	ROSCA THREAD	CAUDAL MÁX. (l/min) MAX. FLOW (l/min)	PRESIÓN MÁX. (bar) MAX. PRESSURE (bar)	€
FPEXC400S11F6000	1" SAE 6000	400	420	876,02

Válvula excavadora bloqueo y control, 500 l/min



Flow check and metering excavator valve, 500 l/min
Valve excavatrices, de blocage et control, 500 l/min
Valvola per scavatori di blocco e controllo, 500 l/min



Referencia Part n°	ROSCA THREAD	CAUDAL MÁX. (l/min) MAX. FLOW (l/min)	PRESIÓN MÁX. (bar) MAX. PRESSURE (bar)	€
FPEXC500S11/41F6000	1"1/4 SAE 6000	500	420	1.003,12

FLUIDAL